

INSIDE OUT

A Feature on a Duo of Contrasting Artists at LEQUIRE Gallery

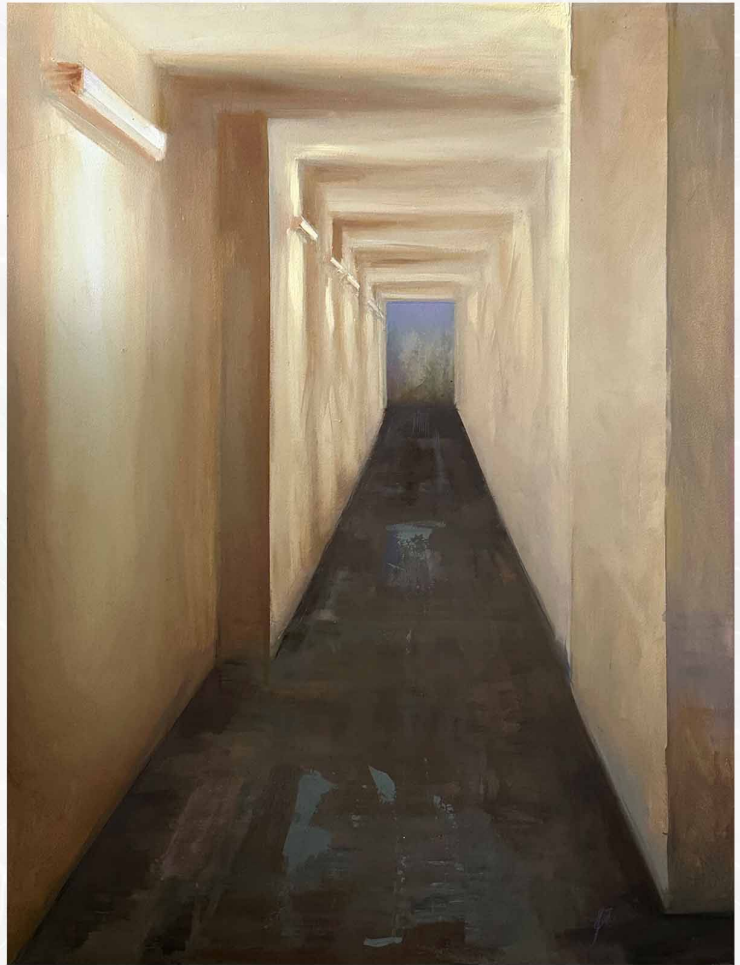
BY VANESSA FRANÇOISE ROTHE



TIME WITH FRIENDS - 20X24 - LORI PUTNAM

The exciting new exhibition “*Inside Out*” taking place at LeQuire gallery in Nashville, Tennessee presents two of the gallery’s renown artists, Juliette Aristides and Lori Putnam, each possessing divergent styles of art. Classical atelier style realism with more neutral and tonal hues contrasts with colorful, light filled Impressionism. However, we can actually find a strong unity in many aspects of their work. Is Modern Impressionism and Tonalism mutually exclusive, or are they derived from a similar love of light and atmosphere? Indeed, this important exhibition offers much more than the obvious surface level inferences, as we dive in and discuss the artists and their diverse use of subject, color, style, and lighting in their works.

Subject is the first element in the works that unites the two artists. The exhibition came together with this great theme of homes and buildings from inside and out, in a way by accident, but proved to be a clever joining of this main subject. Juliette's work focuses on beautiful and intriguing interiors while Lori's captures external charm. Gallery director Elizabeth Cave conveys her thoughts about the exhibit and how it has grown from the original concept. "Over the years, I have seen a trend of particular works quickly leaving the gallery from Juliette Aristides and Lori Putnam: Interiors from Aristides, outbuildings from Putnam. What I initially thought was a coincidence, proved with time, to be a pattern. This was the genesis of the their 2-man exhibition. Upon further consideration, I realized while they work in different genres, there are more similarities surrounding them than differences. Both are internationally recognized, widely respected artists; the range of interests for both has grown over time; both find unique ways to communicate what they see; both have invested a great deal of time in the next generation as



BEYOND THE STUDIO - JULIETTE ARISTIDES

mentors and teachers; and both are ambassadors for a better world. The initial invitation was hyper-focused. Fortunately, both artists strayed and my own intent for the exhibition broadened. The result is a wonderful, much wider exploration from two great artists of our time."

Lori shares a few feelings about her interest in the subject of buildings and homes, and of being outside. She conveys that the earliest seeds of curiosity were planted in her as a child wandering throughout the woods in middle Tennessee, spending hours observing, learning, and drawing in nature. When asked about her subjects in the show Lori explains. "Since I was a little girl, I have pondered the lives of the families and individuals who live in the houses I pass by, imagining their stories, what games they played, their conversations, and their struggles. Each window holds a glimpse of a life I'll never know. Their existence feeds my curiosity about human experiences and how their day-to-day life is the center of their universe as mine is to me. There is something beautifully mysterious about the idea that so many lives are unfolding in those walls, all of which may as well be a world away." In "Weekend at the Cape," I wanted to explore the colors of the white homes bathed in light. Were the people inside on vacation? What was their view with their first cup of coffee? Were they relaxing, starting the day slowly, perhaps with eggs and bacon on the stove?" Lori offers not only her award-winning landscapes in the show, but glistening still lifes as well.

Juliette tells us that interior spaces have always intrigued her because of the light, or the perspective, or both. "I've painted a few long hallways which have a liminal quality, places that are not meant for us to live in... but to move through. I've had many changes over the past few years in

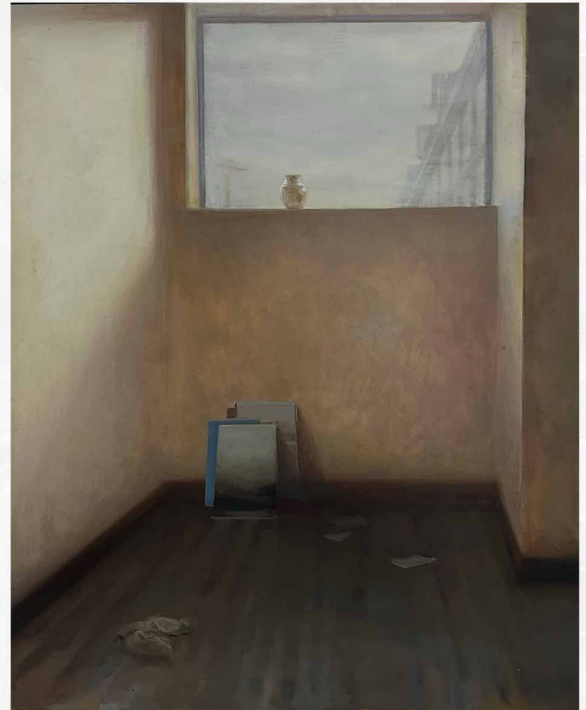


WEEKEND AT THE CAPE - 20X24 - LORI PUTNAM

my life, and these hallways show shifting spaces. In dreams, rooms and houses represent the dreamer, they are the extension of the self. In addition to these interiors, I've put together my first collection of landscapes for this show and am drawn more and more to the outdoors, larger vistas and wider horizons. They reflect my artistic influences and directly reflect where I live and places I have been."

Color and Style play such an interesting role in the exhibition, and each artist has their own different style and manner the paint is applied to the canvas. The realist works by Juliette Aristides tends towards a soft and subdued tonal color palette, carefully blending her brushwork and close values to achieve a refined look on interior walls, skin or landscape. Modern Impressionist Lori Putnam, finds beauty in the colorful visuals of the outside and creates higher key works that capture moments with thicker visible brushwork. The use of color is a stark difference, but both are trying to convey mood and atmosphere to the viewer, and in this sense, are similar.

Although Lori may have started out as an on location plein air artist, she primarily paints in her beautiful art studio these days and her colorful style has developed. "All those years of painting outdoors filled my soul with the natural rhythms found in the landscape, sunlit fractals, and I paint outside still in order to take color notes and capture outside energy. I make important marks,



CROPPED STUDIO CORNER - JULIETTE ARISTIDES

brushstrokes in different directions, intensities, and paint loads. They can show vital movement or wind, the hardness of a rock, patterns in a field, or the siding on a cottage. Then working in the studio, I can truly create and add on to those on location notes. She works with her small painting studies, sketches and explains how during the studio creative process, sometimes it can be thrilling and the painting will take on a new direction. "For Cape Cottages, I used a compilation of resource ideas that resulted in this non-existent scene, which is so believable that I am sure viewers will believe they have been there." Her colorful bold impressionist style uses less blending and brushwork. Color and values can sit side by side without being smoothed, and edges are a combination of hard and soft, leading the eye around the work. This beautiful, bold and brave use of color and brushwork remains one of her identifying aspects.

Juliette's work is created with an indirect painting technique and builds



SPRING BRUNCH - 14X18 - LORI PUTNAM



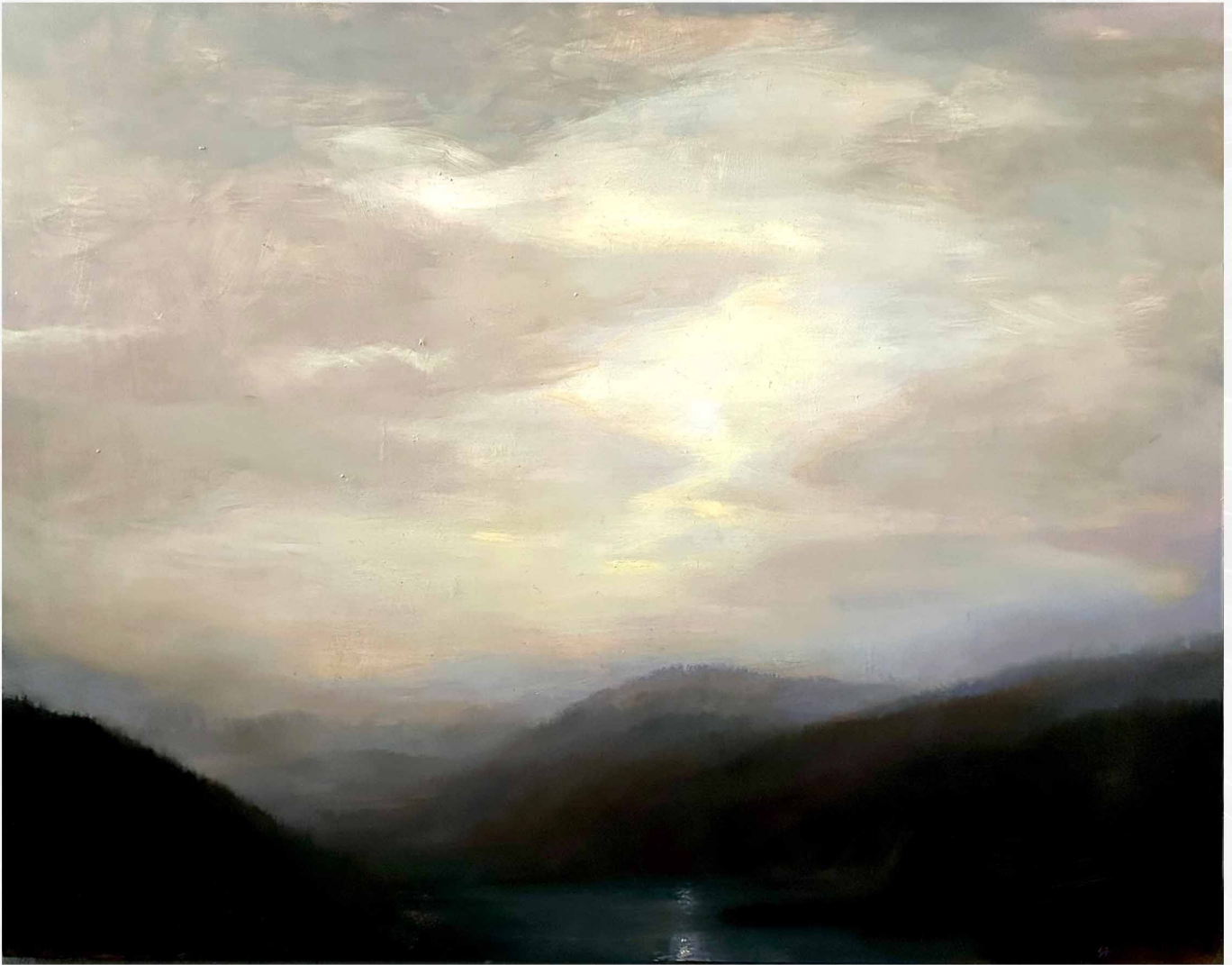
CAPE COTTAGES - 24X30 - LORI PUTNAM

upon a drawing and tonal layer to a more resolved color pass. She confesses a deep love of the 19th century American landscape which is painted with a historical limited color palette and sometimes appears to have very little color at all. “There is a drama and an emotional introspection in the work that feels spiritual to me.” she notes. Juliette reminds us that the artists color tendencies comes from many sources. “The association of color as a vehicle for emotion and tone better expressing the intellect, mirror a dialogue that dates back to the Renaissance between disegno and colore (design and color). My use of grays reflect where I live. I appreciate the beauty of overcast skies and the dramatic mountains in the Pacific Northwest.” This exhibition is the first time Juliette is showing a collection of landscape painting in addition to the interiors. Light and the articulation of form is very important to the realist painter. “For me, it can truly be said that light is the real subject of art.” Her masterful blending and use of subtle changes in color and light are an alluring and iconic aspect of her work.

Indeed, one of the strong unifying factors in both works, is the use of light. Light is truly an important element in their Tonalist and Impressionist styles, and indeed obscure the boundaries of the two distinctions altogether. Both works are also tied together in the subject of house and home and many likenesses are found in both the way they are painted, the lighting and the subject matter.

Lori’s focus is on exterior lighting with the sunlight on buildings. In fact, Lori will note that the colors are actually more vibrant when there is a bit of a cloudy sky, rather than the walls being washed out in direct sunlight. She notes, “Nature was my earliest classroom, and painting outdoors and studying the light variables have impacted my work the most. It is not enough to look at a thing, such as a house, and learn which side is in light and which is in shadow. You must also understand the intensity of that light, its angle to the subject, its color, and what influences the air around it.”

Juliette uses interior lighting and shows the viewer how it can make the subject more interesting or focused, with lamps or sunlight through a window. Her soft blending of the lighting in her works helps convey her thoughts. “I love empty rooms with light moving throughout the day hitting a table, floor or wall. This light becomes the subject and are surprising moments of beauty. In historical work, sometimes light was used as a metaphor for the spirit, and that resonates with me. I will often include windows, showing the source of the light and this has the effect of moving us between the inside and outside spaces.”



ROSS LAKE - JULIETTE ARISTIDES

Modern Impressionist magazine encourages you to go beyond the surface and ponder these various elements of Modern Impressionism, Tonalism and whether one excludes the other, as you delve into the beauty offered in the new exhibition.

Inside Out is soon to be on view at LeQuire Gallery, opening March 25th running through May 31st 2025, with a reception for the artists on April 26th, 2025.